



ALRAIMI BUSINESS GROUP

BUILDING MATERIAL



ALRAIMI BUSINESS GROUP

ABOUT US

Welcome to Pt. ALRAIMI BUSINESS GROUP, where we ease business growth by connecting you to trusted sources in China. With a decade of hands-on experience, our proficient Chinese team oversees the entire supply chain, providing customized solutions for entrepreneurs worldwide. Our global reach has served satisfied clients across the Middle East, South East Asia, Africa, and Europe.



INTRODUCING OUR SERVICES

SUPPLY CHAIN MANAGEMENT

We streamline operations, optimize inventory, and reduce costs, allowing you to focus on business growth.

SUPPLIER SOURCING

Making the process of finding products and manufacturers fast and easy.

MANUFACTURING

We help you develop and produce any product you want.

LICENSING & CERTIFICATES

We provide optional licenses and certifications for all your goods suitable for your region

WAREHOUSING & LOGISTICS

We offer warehouses equipped with a team ready to repack, organize and ship your goods by sea or air including door-to-door shipping services.

OEM BRANDING

Place your own private label on an already-existing product line.

Over a decade of experience. Our global presence has garnered a loyal clientele across the Middle East, South East Asia, Africa, and Europe. Our extensive range includes building glass, sanitary ware, flexible wall stone cladding, wood, roofs, doors, tiles, lighting, fire alarms, and electronic hardware such as doorbells, door locks, hotel electric locks, and touch switches. We prioritize perfect quality in every product, ensuring that whether it's a large-scale public building or a smaller residential project, our service and end-products consistently meet the highest standards.

SMART BELLS, LOCKS & SWITCHES **PARTNER**

Our reliable manufacturer is a leading provider for intelligent hotel and household products. Founded in 2006, the manufacturer has covered clients from over 30 countries and over 5000 hotels. Accumulating years of experience producing up- to-date intelligent and energy-saving equipment including smart card power switches, wired/wireless touchscreen doorbells - lighting - and curtain control switches, modern accessories of practical USB charging ports, sockets, and wireless hotel APs for walls and ceilings. Our manufacturer offers technical advantages, stable product quality and honest prices

SMART BELLS, LOCKS & SWITCHES



ELECTRONIC DOOR BELLS



PASSCODE LOCKS



ELECTRONIC HOTEL LOCKS



FULL SETS

A modern bathroom interior featuring a white vanity with a large mirror and a row of urinals in the background. The floor is dark and tiled. The lighting is soft and focused on the vanity area.

SANITARY WARE **PARTNER**

Established in 1998 our partner has emerged as a leading global manufacturer of bathroom and home furnishing products. Their extensive range includes sanitary ware, bathroom cabinets, toilets, faucets, showers, hot tubs, saunas, steam rooms, and supporting products. Utilizing foreign advanced technologies and large-scale automatic tunnel productions, their current production area spans over 30,000 square meters.

SANITARY WARE



SHOWER GLASS DOORS



BASINS



TAPS & SHOWER HEADS



VANITY CABINETS



MIRRORS



TOILETS

SANITARY WARE



KITCHEN SINKS



JACUZZISS & TUBS



SHOWER STEAM ROOMS



SAUNAS



LEDs & LIGHTING PARTNER

Since 2004 our reliable partner leads the customized lighting industry, crafting unique lighting solutions for top hotels like Marriott, Westin, Hilton, and Sheraton, as well as known real estate firms like Vanke and Country Garden. Operating from two modern manufacturing bases spanning 36,000 square meters, their factory also includes a 2,500 square meters exhibition hall showcasing over 2,000 lighting craftwork. With over 50 experienced designers, they stay abreast of the latest trends and technologies, seamlessly blending art and technology to create world-class lighting designs.

LEDs & LIGHTING



PENDANT LIGHTING A



PENDANT LIGHTING B



CHANDELIERS



CEILING LIGHTING



LED SPOTLIGHTS



TABLE LIGHTING

A low-angle, upward-looking photograph of several modern skyscrapers with glass facades. The buildings are reflected in each other, creating a complex geometric pattern. The sky is a pale blue. The overall color palette is dominated by blues and greys.

GLASS BUILDING MATERIAL **PARTNER**

Established in 1998, our trusted manufacturer has extensive experience in crafting custom aluminum and glass facade systems for building projects worldwide. They cater to various building types, including hotels, commercial buildings, residences, apartments, and villas.

Each product undergoes rigorous testing to ensure it meets performance standards for water, wind, noise, and sun resistance/protection.

GLASS BUILDING MATERIAL



OFFICE GLASS DOORS & PDLC GLASS



GLASS DOORS



BUILDING GLASS



PDLC GLASS



OTHER

INTERIOR & EXTERIOR BUILDING MATERIALS PARTNER

Established in 1978, our esteemed partner is a leading group corporation, ranking among the largest enterprises in China with a total business volume of 45.5 billion USD. They specialize in wood products like logs, plywood, and MDF, along with steel products such as rebar, wire rods, sections, plates, and sheets.

INTERIOR BUILDING MATERIAL



PVC MARBLES SHEETS



WOOD PLASTIC PANELS



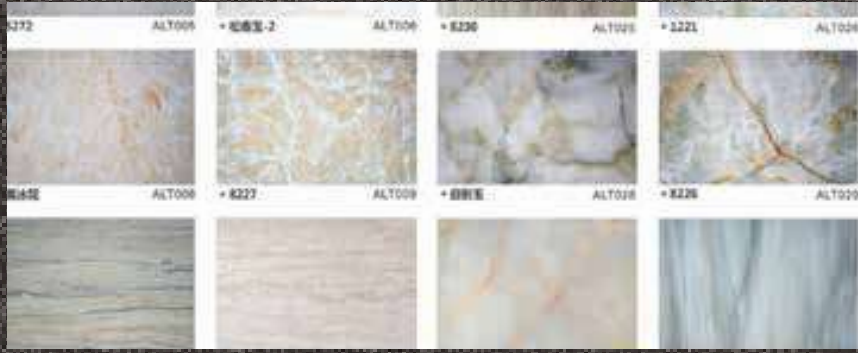
SMART WOODEN FLOORING



FLEXIBLE CLADDING STONE



ALUMINIUM HONEYCOMB PANELS
(CEILING)



PVC MARBLE SHEETS

EXTERIOR BUILDING MATERIAL



STONE COATED STEEL ROOF



STONE COATED STEEL ROOF



ASPHALT SHINGLE



STONE COATED STEEL ROOF



FLEXIBLE CLADDING STONE



FLEXIBLE CLADDING STONE



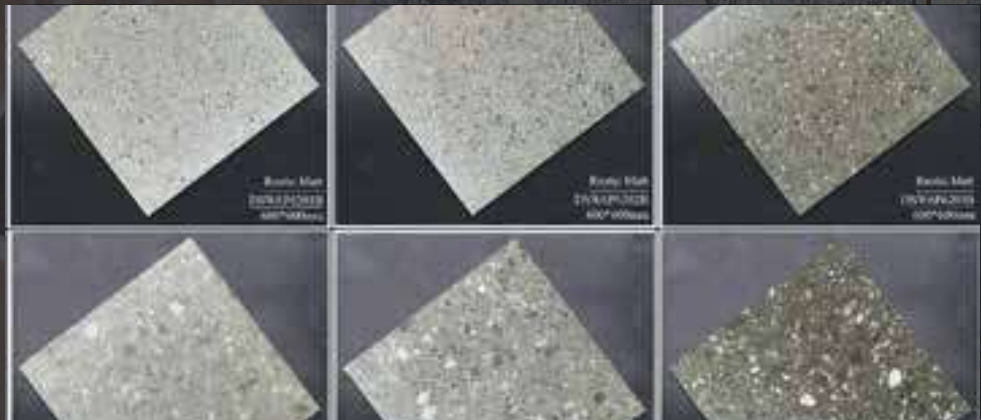
CERAMICS & TILES **PARTNER**

Established in 2007, our reliable manufacturer sticks to the motto of "Assiduousness, Professionalism, Integrity, and Credibility." With extensive experience in ceramic tiles, cutting-edge technologies, and a global client base, our partners are dedicated to providing top-quality polished porcelain tiles, light/dark tiles, rustic tiles and various other floor tiles in diverse styles and sizes.

CERAMICS & TILES



LIGHT TILES



RUSTIC TILES



RUSTIC MATT



DARK TILES



FULL BODY TILES



GLAZED PORCELAIN

DOORS PARTNER

Our trusted partner specializes in manufacturing solid wood and semi-solid veneer doors. Established in 2004 in the industrial area of Foshan city, their factory employs a total of 200-300 skilled workers.

DOORS



ALUMINIUM FRAME/ WOOD



SEMI- SOLID VENEER DOORS



EXTERIOR DOORS



EXTERIOR SOLID




MDF DOORS



DOUBLE INTERIOR DOORS

FIRE ALARM SYSTEMS PARTNER

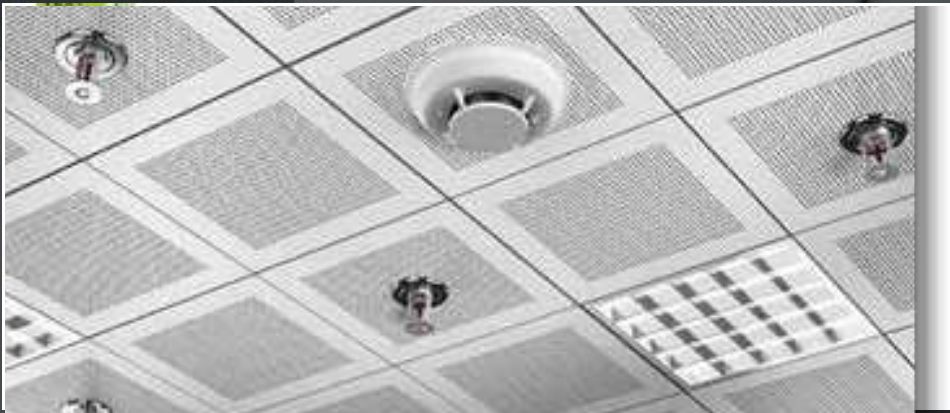


Since 2005, our dependable partner has been a leading provider of fire safety products, solutions and services, serving clients in over 100 countries. Committed to sound operations, continuous innovation, and open collaboration, they offer competitive fire safety product lines, including fire alarm systems, central monitoring emergency light systems, fire telephones/emergency audio systems, fire pumps, fire hoses and gas suppression systems.

FIRE ALARM SYSTEMS



ADDRESSABLE FIRE ALARM



FIRE EXTINGUISHERS



FULL ALARM SYSTEM



FIRE ALARM CONTROL SYSTEM



ADDRESSABLE FIRE ALARM



CONTROL PANELS

The background of the slide features a close-up, low-angle shot of a white air conditioning unit mounted on a wall. The unit's horizontal slats are visible. In the lower right foreground, a person's hand is holding a white remote control, pointing it towards the air conditioner. The hand is wearing a watch and a bracelet. The entire scene is dimly lit, with the text overlaid in a semi-transparent dark grey box.

AIRCONDITIONING PARTNER

Our supplier is a key player in the global home appliance industry, specializing in research & development, production & distribution of air conditioning, refrigeration and other home appliance products. Their high-tech industrial park spans 800,000 square meters and houses dozens of modernized production lines. With an annual production capacity of up to 12 million units, they represent a leading brand in the home appliance industry. With a sales network covering over 150 countries and regions, they have become one of the most significant manufacturers in China.

AIRCONDITIONING



OUTDOOR UNITS



OUTDOOR UNITS



FULL RANGE



AIRCONDITIONERS



FLOOR STANDING



PASSCODE LOCKS



ALRAIMI BUSINESS GROUP

BUILDING MATERIAL

CONTACT US

✉ hello@alraimigroup.com

☎ +8619924111300

📷 [alraimigroup](#)

🌐 www.alraimigroup.com